

Monticello Park

NEIGHBORHOOD ASSOCIATION NEWSLETTER



January – February 2013

**Do what you can,
with what you have,
where you are.**

- Theodore Roosevelt

As the curtain unfolds on 2013 what does the self-directed production of your life look like? Is getting involved in your Monticello Park community part of your role?

A thriving neighborhood is dependent upon resident participation and support. And what's fantastic is that participation and support come in various forms, shapes and sizes allowing you to "Do what you can, with what you have, where you are." Is your schedule really tight these days? Then show your neighborhood pride by simply wearing your MPNA T-shirt. Have a little more time? Fellowship with neighbors at an MPNA social, encourage local theater by checking out a Woodlawn Theatre play, encourage local art by inviting friends to wander the *On and Off Fredricksburg Studio Tour* with you, or submit an article or photo to the newsletter. Perhaps you're ready to amp up your involvement by participating in a gardening or graffiti wipeout day or serving on an MPNA committee that helps welcome new neighbors to Monticello Park.

Our hope is that you will open the curtain – and the following pages – to peruse the abundance of opportunities that are available and seize at least one of them!

Save the date!

NEXT MEETING

Monday, January 28 @ 7pm
Grace Presbyterian Church
950 Donaldson Avenue

*Come for sips and **Caffe Tutti sweets**. SAWS will present on the proposed rate hike and ask residents about other water topics they'd like to hear about in the future.*

FEBRUARY SOCIAL

"Share the Love"

Sunday, February 17
5pm (see page 13)

Join us on a VIA Primo ride downtown to enjoy food & fellowship.

President's Message

**2013
Monticello Park
Neighborhood Association**

Board of Directors

President: Rob Sipes
738-0379
V. President: Frank Ramirez
734-0999
Secretary: Ferne Burney
734-2445
Treasurer: Richard Weik
731-0780

Board Members

Adrian Contreras
Gary Hudman
Ressie O'Connors
Sarah Rice
Michael Robbins

Newsletter Committee

Editors: Ferne Burney, Sarah Rice
For article and event submission
please call 734-2445 or email
ferneburney@hotmail.com

Advertising Mgrs: Board Members
For pricing info call 734-2445 or
visit monticelloparkna.com

MPNA
P.O. Box 5851
San Antonio, TX 78201

HELPFUL PHONE NUMBERS

District 7 Council Office 207-7044
SAWS 724-7097
CPS 353-2222
Officer Joey Vidal 218-6546
SAPD, West Substation 207-7420
SAISD Police 271-3124
SAISD Truancy Office 223-2360
VIA Transit 362-2019
Code Compliance 311
Animal Control 311

(Sung to the closing tune from Act I of Les Miserables) "One year more... one more year until I'm finished and term limits have taken hold." We are now officially into winter, and I hope everyone had a peaceful holiday season.

As you may have noticed, the VIA Primo route is up and running. I have heard from neighbors who have already used it to go to work or to take their bikes downtown. I know what you are thinking, however - "the stops don't look done." Well, they are not. There is still some work and landscaping to be done but I have been told that it should be completed by the beginning of February. Our next neighborhood task is to (once again) remind VIA that the current (now regular) bus stop facilities at Club Drive and Mary Louise are inadequate and should be improved.

The final plans for Jefferson have still not been resolved, though we expect that the design team will come back to the City's HDRC sometime this spring for final approval. According to the school district's website, the project will probably have around \$13 million in alternates. If the "base bid" is under the \$19 million budget when the project receives bids from contractors, the district will choose which alternates to fund. THAT is when things will become interesting. Will stadium lights not found at the newest Northside or NorthEast schools be considered more important than much needed building repairs and upgrades?

At our November General Assembly Meeting, we held elections for your neighborhood Board of Directors. We had so much interest this year, that a couple of long-time Board Members decided to take a break and let some new faces participate. I would like to thank Gail and Tony for their hard work over the years. As many of you know, Sagrario moved to another city during the year, and she has already been greatly missed as well.

Please join me in welcoming Adrian and Ressie to the Board for the first time. Bianca also returns to the Board, but she was always so active it doesn't really seem like she was ever away. Our first-time members last year, Sarah and Gary, brought a new jolt of enthusiasm, so I look forward to a very positive and productive year! Yes, we will have the boring zoning changes and "what were they thinking" cases to discuss, but we also will have some fun as well... especially if Richard keeps bringing chocolate. I'd like to remind everyone that the Board Meetings are open to all. We meet in the conference room in the Deco Building at 6:30pm on the second Monday of every month.

The socials have been a huge hit, so we are looking to bring some "social" to our General Assembly Meetings - snacks. We plan to have some interesting presenters this year, and we always have informative updates. At the January 28 meeting SAWS will be talking about the proposed rate increase and taking questions about future presentations we may want to hear about (say... landscaping). I hope to see you there!

Rob Sipes
President
Monticello Park Neighborhood Association



MPNA Treasurer's Report

Checking Account - \$7,454.21

Savings Account - \$3,896.52

CD - \$11,329.70

CAFFE TUTTI

CAFÉ & COFFEE SHOP

1933 Fredericksburg Rd, Ste. 107
(across from Woodlawn Theatre @ Furr Rd)

HOURS

Monday 7am – 3pm

Tuesday through Thursday 7am – 5pm

Friday 7am – 9pm

Saturday 9am – 3pm

Closed Sundays

Catering Available

For catering please call 210.288.8127

210.732.2400

[facebook.com/TuttiLovers](https://www.facebook.com/TuttiLovers)

*Thank you, Caffe Tutti, for
contributing sweets to our January 28
MPNA General Assembly Meeting!*

CAMINERO CONSTRUCTION, LLC



- ASPHALT & CONCRETE
- ASPHALT REPAIRS
- DRIVEWAYS
- RANCH ROADS
- PARKING LOTS
- SEAL COATING
- CITY OR GOVERNMENTAL CONTRACTS

"Quality You Can Trust"

Family Owned Since 1947

No Job Too Big or Too Small

210-573-7765

Mobile

210-885-8426

MPNA GENERAL ASSEMBLY MEETINGS

All General Assembly Meetings take place at 7pm at Grace Presbyterian Church, 950 Donaldson Avenue.

JANUARY 28
MARCH 25
MAY 27
JULY 29
SEPTEMBER 30
NOVEMBER 25
(all Mondays)

Have an idea for a speaker or want to put an item on the agenda? Please contact Rob Sipes at 738-0379.

**MPNA Board Meetings are also open to everyone and take place the second Monday of every month in the Conference Room of the Deco Building (1800 Fredericksburg Rd) at 6:30pm.*

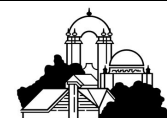
**Have an event, article or photo you'd like to submit for the March/April issue of the MPNA newsletter?
Email ferneburney@hotmail.com**

March 2013

Sunday	Monday	Tuesday	Wednesday	Thursday	Friday	Saturday
31					1	2
3	4	5	6	7	8	9
10	The deadline for submission is <u>March 8.</u>					
17	18	19	20	21	22	23
24	25	26	27	28	29	30

OTHER EVENTS AROUND MONTICELLO PARK & SAN ANTONIO

Month	Day	Event Name	Time	Description
February	1-2	Window Restoration Workshop	9am - 4pm	The City of San Antonio's Office of Historic Preservation will host a Wood Window Restoration Workshop at the historic Acosta/Halff House in Hemisfair Park. See pages 14 & 15.
	14	Valentine's Day Weddings	10am – 2pm	Free Valentine's Day Wedding and Renewal of Vows Ceremonies @ Jefferson United Methodist Church. See page 6.
	16&17 17	On & Off Fred February Social	11-6; 12-5 5pm	Fore more info see page 7. For more info see page 13.
	7-24	San Antonio Stock Show and Rodeo	8am - closing	Located at the AT&T Center and Freeman Coliseum Grounds, the San Antonio Stock Show & Rodeo features nightly and matinee PRCA Pro Rodeo Performances with a live concert following each Rodeo. Family Fun with a livestock show, horse show, carnival, petting zoos, interactive exhibits, wildlife area, shopping and live music. For more info call 210-225-5851 or visit sarodeo.com
	16	Asian Festival	10am-5pm	The family-friendly event features music, cultural performances, food, fashion, crafts and other products. Enjoy authentic Asian-American food from 15 vendors, offering Japanese, Korean, Thai, Laotian, Philippine and other cuisines. Enjoy traditional Asian dance and musical performances on three separate stages; multicultural demonstrations of cooking, henna painting and palm reading; and craft sales including clothing, artworks, dolls, silk items and other gifts. Adult (13 and older): Advance \$8, Gate \$10; Child (6-12): Advance \$5, Gate \$5; Children 5 and under free. For additional information, call (210) 458-2300 or visit TexanCultures.com.
March	9	Luminaria	Approx. 7pm -12am	A celebration of contemporary arts in San Antonio, highlighting artists from dance, media arts, literary arts, music, theatre & performance, and visual arts. This one-night festival features 12 performance stages, several galleries, and site specific installations throughout the grounds. This is a FREE event. For more info visit luminaria.org or call 210-212-4999.
	10	San Antonio 5K9 Walk Run	7am	This event starts and finishes at the Petco Headquarters (654 Richland Hills Dr.) It includes a great pet/ fitness expo. Your feet help their paws, as the proceeds go to support local animal welfare right here in San Antonio through the Petco Foundation. For more info visit 5k9walkrun.com or call (760) 635-1795.
April	18-28	Fiesta San Antonio		Fiesta® San Antonio—100 events • 11 days • 1 Fiesta! For more info call (210) 227-5191 or visit fiesta-sa.org
	21	VIVA Botanica & Plant Sale	10am - 2pm	Viva Botanica! – A Garden Fiesta for the whole family will be celebrated at the San Antonio Botanical Garden. Decorate your stroller or red wagon and wear your finest Fiesta attire to enjoy the spring beauty of the San Antonio Botanical Garden. Start the fun with a children's parade and first-ever Fiesta Flower Court. For more info visit sabot.org or call 210-207-3250
	30	MPNA Beautification Award Application Deadline	5pm	Visit monticelloparkna.com for more details and to download the application (included in the next newsletter).
June	1	MPNA Garage Sale	TBD	More info coming in the next newsletter. Questions? Email ferneburney@hotmail.com





LOVE IS IN THE AIR, AGAIN...

Jefferson United Methodist Church is having our

2nd Annual

Valentine's Day Weddings



Join us in our celebration of Love & Marriage

The Wheeler Chapel of Jefferson UMC will be open to the public for

FREE Individual Wedding Ceremonies

&

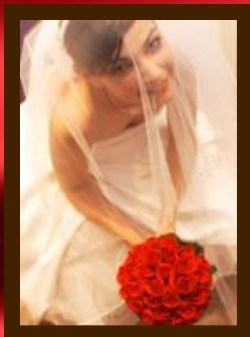
FREE Individual Renewal of Vows Ceremonies

THURSDAY, FEBRUARY 14th, 2013

10:00am – 2:00pm

Call (210) 735-5221 for reservations and information

or email dmilligan@jeffumc.org



**** Marriage Certificate Must be Obtained 72 Hours in Advance ****

*** Optional Premarital Counseling Available Upon Request ***

*** Love Offering Welcome ***

Performed By:

Rev. David Cervantez
Dr., Rev. Malford Hierholzer

Rev. Bert Clayton
Rev. Harry G. Kahl



6th ANNUAL ON & OFF FREDERICKSBURG ROAD STUDIO TOUR

2-day self-guided tour of artists' studios in neighborhoods along historic Fredericksburg Rd.

Saturday, Feb. 16, 11:00 am-6:00 pm & Sunday, Feb. 17, 12-5pm

Seven neighborhoods are featured on the tour this year: **Monticello Park**, Jefferson, Woodlawn Lake, Los Angeles Heights, Keystone, Beacon Hill, and Alta Vista. Among the more than 70 artists participating in this year's tour are **Monticello Park residents David Alcantar** (paintings @ Woodlawn Theatre), **Edith Cuellar** (weaving and fiber arts), **David Guerrero** (paintings), **María Guerrero** (jewelry), **Eric Lane** (photographs @ Elsmere Art Co-op), **David S. Rubin** (drawings), and **Sarah Shore** (ceramics). Galleries and arts-related businesses on the tour include Artiqueology, ArtCloth Studios 1803, Ilê Bahia Dance & Martial Arts, Big Grass, Casa de Ivela, Centro Cultural Aztlán, Clamp Light Studios & Gallery, Deco Pizzeria, Elsmere Artist Cooperative, Long Hall Gallery, Magnolia Salón de Arte, Poison Apple Dance 'n Cheer, Rene's Art & Antiques and Woodlawn Theatre.

The tour kicks off **Friday evening, February 15, 6-9 pm**, with the not-to-be-missed **On & Off Fred Autograph Gala**, at **Bihl Haus Arts** (2803 Fredericksburg Road). The preview exhibition showcases one work by each of the 70+ artists who will be on hand to autograph your personal copy of the tour catalog. Enjoy lavish hors d'oeuvres, wine, music by the fabulous 'art band' **Los Nahuatlats**, and the opportunity to mingle with artists.

Then take the self-guided tour on **Saturday, February 16, 11am - 6pm**, and on **Sunday, February 17, 12-5pm**. Arrive by car, bike or bus, or take a combination. Bike World Rentals (\$5 half-day/\$10 full day) will be available at Bihl Haus (2803 Fredericksburg Road) and Beacon Hill Presbyterian Church (1101 Woodlawn Ave.).

You're also invited to attend special evening events during the tour weekend, including receptions at **Long Hall Gallery** and **Clamp Light Studios** on **Saturday, February 16, 6:30-8:30 pm**; and the closing reception, **Say Goodnight, Fred**, at the **Woodlawn Theater** on **Sunday, February 17, 5:30-8:30 pm**.

New events in March round out this annual celebration of the arts on & off Fred Road. First, **Fred Sings**, at **Bihl Haus Arts on Sunday, March 3 at 2pm**, is a poolside concert by three of San Antonio's most important women jazz composers and performers: **Bett Butler**, **Katchie Cartwright** and **Carol Cisneros**. This event, organized by **Beverly Prado**, also commemorates Women's History Month. And second, **Fred Reads**, at **Bihl Haus Arts on Sunday, March 24 at 2 pm**, is a reading by poets **Sheila Black**, **Barbara Griest-Devora** and **Ignacio Magaloni**. This reading, an official Poetry Month SA event, also marks the closing of the 6th Annual On & Off Fred exhibit at Bihl Haus. All six of these featured artists live in the On & Off Fred area, evidence yet again of the vitality and diversity of the arts in this 'hood.

Admission for two to all events is free with the purchase of the tour catalog with map. Advance catalogs (\$10) available beginning Feb. 1st at: **BIG GRASS** (637 W. Hildebrand), **DECO PIZZERIA** (1815 Fredericksburg Road) & **VEE'S SALON** (1022 Donaldson), and by mail from the website (\$15). They will also be available during the tour for \$15 at Bihl Haus on Feb. 16 and 17. Visit onandoffred.org to view tour information and images of each artist's work. See interviews with participating artists from the 2013 tour at: <http://vimeo.com/19492697>

The mission of the ON & OFF FREDERICKSBURG ROAD STUDIO TOUR is to promote the work of diverse visual and cultural artists in the area, enhance the appreciation for the arts in the community, and stimulate neighborhood revitalization. The tour is made possible with the support of the City of San Antonio Council Districts 1 and 7, the Department of Culture and Creative Development, the Community Arts Access Program and Fred's Amigos; and our sponsors Jefferson Bank and the Jefferson Woodlawn Lake Community Development Corporation. The tour is organized by area artists and Bihl Haus Arts (www.bihlhausarts.org), which is located at Primrose at Monticello Park Apartments, the only non-profit professional art gallery on the premises of 100% senior affordable housing in the U.S. For more information, 210.383.9723, or kellenkee@swbell.net Bihl Haus sponsors include the WellMed Charitable Foundation, the San Antonio Area Foundation and Primrose.



MEET THE NEIGHBORS – LONGTIME RESIDENTS

BY JAN PERANTEAU

F
r
a
n
k
&
T
i
c
o



Frank Ramirez met Sylvia Gallo when he was in high school at Thomas Jefferson. She was a student at J.T. Brackenridge High School. It must have been love at first sight, because after graduating in 1959, Frank married Sylvia in 1960. They have been married 52 years and during that time they have seen many changes in the neighborhood. Frank said, “The neighborhood has improved throughout the years. The reconstruction of Donaldson from Elmendorph to Kampmann made a big difference. The speed bumps have slowed down the traffic,” he added.

The Ramirez Family moved to their house on Donaldson in 1973. Lettie, (Leticia) was 10 or 11 and Tico, (Frank Ramirez III) was 8. “Lettie attended Woodlawn Elementary, Horace Mann Middle School and Thomas Jefferson High School. Tico went to St. Paul’s Catholic School and then on to Thomas Jefferson for high school,” Frank said. “I joined the military, the National Guard, in 1965 and went on active duty in 1966.” In 1967 Ramirez began one of two tours of duty in Vietnam. He served the first tour in 1967-1968. The second tour came in 1971-1972.

Frank and Sylvia were attracted to the houses in Monticello Park because of the architecture and the solid construction. Ramirez said, “I have always been interested in architecture and engineering. That is why I came to Jefferson High School. But Jeff was hard. It was a big school. Math was my toughest subject. But my father had been in construction all his life and I took over my father’s business.”

Looking at the Ramirez home, built in 1938, it is easy to see why the couple fell for it. Beautiful hardwood floors gleam throughout the house. A Chambers stove sits in the kitchen and continues to be a centerpiece in the room. A staircase near the front door leads to upstairs bedrooms and living area. The house has an abundance of windows for light to stream through. Ramirez said, “I liked how the houses were built. You cannot compare the houses in new areas with the houses in our neighborhood. The quality of the homes in our neighborhood, the architectural design and the details aren’t found in newer areas. Everything in this house is original. We are the third owners. I have the original blueprints.”

As for what might be improved in the neighborhood, Ramirez quickly said, “I would like more landscaping in the yards and ground maintenance. People pass on and leave their houses to siblings-they don’t always take care of the place.” He suggested more house and beautification awards given to those who make improvements on their house and yard. Since Ramirez has served on the Monticello Park Neighborhood Association Board as V. President, and board member for 5 years, he has been influential in getting some of the current beautification awards.

Another area of need Ramirez mentioned, “Curbs and sidewalks need to be redone. We have been trying for years. The alley improvements are fantastic, but we need those improvements to all our alleys.”

Ramirez said he had been a general contractor in the neighborhood for 43 years and his wife, Sylvia has been right beside him as the bookkeeper, secretary and general manager of the accounts, “But with Sylvia sick, (cancer), I have to do everything. I don’t mind. It’s just the way it is.”

MEET THE NEIGHBORS – NEWBIE RESIDENTS

BY JAN PERANTEAU



One of the new families in the neighborhood is Nic Reisen, Lisa Reese and daughter, Mikaela (6 mo.). They live on Club and are eager to talk about their new home and the neighborhood. Mikaela is especially vocal on every question asked and expresses herself with various noises and body wiggles. Moving in last April they have had a chance to explore the neighborhood. Lisa said, “We really enjoy the walkability of the neighborhood. We walk to Woodlawn Lake, walk to breakfast at a place on Fredericksburg and walk to H.E.B.” Mica joined in with her baby babble, and Nic interpreted, “She likes her long walks with Grandma up and down the neighborhood streets.” Lisa’s mother, Elena Morales, lives with the family and takes care of Mica when the parents are at work. Both are architectural interns at Alamo Architects.

Reisen explained, “We were interested in living near downtown and we love old neighborhoods. We lived in Southtown and also Alta Vista, on the west side of San Pedro and across from Monte Vista.” Reese added, “We liked the character of the older homes in the neighborhood.” The multi-generational aspect of the neighborhood appealed to the couple.

“Mother likes living here and hopefully Mica will learn to speak Spanish from Grandma and me.”

Reese and Reisen like living near the bus lines. “We want to try the Primo bus soon,” Reese said. Since they both work at Alamo, located in Southtown, that seems a real possibility.

What about neighbors, have they met anyone? Reese said, “We’ve wanted to come to the neighborhood meetings and socials, but we are still adjusting to having a baby.” Reisen said they did attend the Historical Homeowner’s Fair, held at Thomas Jefferson High School this fall. They have met immediate neighbors and various people on walks. “Everyone is friendly,” they both said.

Reisen mentioned the schools and especially TJHS. “The architecture at Jefferson is fabulous.” They are encouraged by the changes at Woodlawn Elementary, which Reisen said, is to become an academy and will house Pre-K through 8th grade. He also mentioned the program at the Young Women’s Leadership Academy as a possibility for their daughter.

“We plan to renovate the little house out back for Lisa’s mother, but for now we are all one big happy family in the main house,” Reisen said. Before leaving, Reese wanted the particulars on the next neighborhood meeting and this reporter and Home Tour committee member wanted a tour of the house. The house is a real beauty, built in 1926, so as the tour and interview ended the reporter put in a pitch for being on the Home Tour. The response was encouraging—“We’d be interested in a few years, after we get some renovations done.”

MPNA BUSINESS BUZZ

By Sarah Rice



Woodlawn Theatre Worth a (Re)Visit

Well, I'll be! It took me living in the neighborhood almost three years before I finally saw my first Woodlawn Theatre production this past December. While I'm a little embarrassed to admit this, I have a hunch I'm not the only one who didn't realize we've got some fantastic theater literally right outside our front doors.

After many months of driving by the theatre on our way to and from our home and seeing plays advertised on the marquee to which we'd say to each other "Hey, it might be fun to go see that," my husband and I decided it would be an enjoyable outing to take our holiday houseguest to "A Christmas Story." And enjoyable it was! "A Christmas Story" is a classic, and as I think is generally the case with a classic, you either love it or want to roll your eyes at it. All three of us fell into the former category and figured that even if the play was a flop we'd still get a kick out of silently saying the oh-so-famous lines with the actors.

But, boy, were we in for a treat. I don't want to spend time reviewing a play that you can't see because it's run has expired but suffice it to say that the set was wonderful, the actors nailed their roles and my husband and I looked at each other when it finished and asked "How much are season tickets?"

Even better, it wasn't strictly the play itself that was enjoyable. I stopped by the theater earlier in the day to purchase tickets. Walking into the lobby I was impressed by the handsome interior and offerings displayed at the snack and drink bar. Pausing to take it in, I was congenially greeted by a young man behind the counter who wanted to know how he could help me. Despite various distractions (phone calls, other employees needing info, etc.), he seemed genuinely glad to be assisting me and helped me hand-select what he thought were the best seats remaining out of a nearly sold out show (to give you an idea of its popularity the three of us each ended up seating one *behind* another.) While simple, it was such a pleasant transaction that I left eager to return later that day for the full experience.



The time had come. As we walked across Fredericksburg Road my excitement continued to grow as we were bathed in the glow from the



recently restored marquee lights claiming the theatre's rightful spot along the busy thoroughfare. You felt like you might be in one of the pictures capturing the Theatre's earlier glory days (pictured left).

A nippy evening, we didn't bask in the glow too long but rather quickly entered the building and joined the people milling about in the warm lobby. A relaxed yet palpable energy permeated the room. Our red wine purchases in hand, we made our way into the Mainstage Theatre and noted that it matched the lobby in its good looks. We found our seats, which were comfortable and located in wide rows with plenty of legroom. I did a 360 and noticed every seat in the house seemed to have a great view of the stage. Nice!

Greg Hinojosa, the new Artistic Director, warmly greeted the audience, shared a few words about Woodlawn Theatre and set the mood for the play. Come intermission I was pleased to find manageable lines at both the concessions and restrooms (perhaps more important to the ladies than the men!). Simply put, the play was fantastic and we happily and chattily discussed our experience as we scurried home in the cold.

Perhaps you've been around long enough to claim attendance at movies at the Woodlawn Theatre when it originally opened in 1946. Maybe you even witnessed the legendary John Wayne hosting the world premiere of his movie *The Alamo* there in 1960. Unfortunately, while the theatre was a prestigious venue in the 60's and 70's, it fell upon hard times and was forced to shut down. For many years various owners unsuccessfully attempted to bring it back to its former glory. But



now, as I've had the pleasure to witness, the resurrection of the Woodlawn Theatre as a live performance venue is definitely on track.

Like MPNA, Woodlawn Theatre, Inc. secured its non-profit status in 2012. This newly formed non-profit organization is devoted to creating opportunities for its surrounding community by providing quality, entertaining, educational, and affordable programming for all ages. Its mission is to assist in sustaining the tradition of theatre while contributing to the lives of local artists, and to enrich the community by encouraging young adults to participate in the arts. Key aspects of the theatre's outreach include:

- An active board of community leaders devoted to renovating the Woodlawn Theatre, providing educational scholarships, and re-acquainting the community with the theatre.
- A year-round Children's Theatre Program (Academy for the Performing Arts) to educate and train the "stars" of tomorrow, today.
- A year-round Main Stage Program to entertain

the San Antonio region with quality, entertaining, educational, relevant, and affordable programming for all ages.

- A year-round Black Box Theatre Program to entertain and stimulate the theatrical minds of San Antonio with dramatic and comedic plays, and smaller musicals.
- (<http://woodlawntheatre.com/history-theatre/>)

The Woodlawn Theatre is continuing its legacy with new live performance legends yet to come. The 2013 lineups for the Main Stage and Black Box include something for everyone (see below). Ticket prices are \$23 Adult; \$20 Senior/Military/SATCO; and \$15 Student/Child. For more information:

The Woodlawn Theatre
1920 Fredericksburg Rd
Telephone: 210-267-8388
Office hours: 10am - 5pm Mon - Fri;
2pm - 5pm Sat
Box Office opens 1 hour before each show
email: info@woodlawntheatre.com

on the MAIN STAGE	in the BLACKBOX
THE FULL MONTY FEB 15 - MAR 17	Neil Simon's chapter 2 FEB 8 - FEB 24
The PRODUCERS APR 5 - MAY 5	The Agony and the Ecstasy MAR 15 - APR 7
IN THE HEIGHTS MAY 24 - JUN 23	Steve Jobs MAY 10 - MAY 26
TOP SECRET MUSICAL AUG 2 - SEP 1	LITTLE WOMEN JUN 28 - JUL 21
JESSE ELKIND'S YOUNG FRANKENSTEIN OCT 3 - NOV 3	NIGHT MOTHER SEP 13 - OCT 6
TBA NOV 30 - DEC 29	BILLY ELIOTT NOV 1 - NOV 24

ABOUT THE ARCHITECT

(woodlawntheatre.com/history-theatre/)

The Woodlawn Theatre was designed by John Eberson (1875-1954), an American architect best known for his movie palace designs in the atmospheric theatre fashion. Eberson's only other San Antonio work is the Majestic Theatre.

Born in Czernowitz, Austro-Hungarian Empire (today Ukraine), Eberson went to high school in Dresden and studied electrical engineering in Vienna. He arrived in the U.S. in 1901 and at first settled in St. Louis. There, while working for a construction company he designed his first theater, the Jewel, in Hamilton, OH. A year later he was in Chicago, and in 1926 he made his final move, to NYC.

Eberson attained national, and even international acclaim for his atmospheric theatres, many of them executed in exotic revival styles, including Italian Renaissance, Moorish Revival and others. "He specialized in depicting outdoor settings with no formal walls and made the whole auditorium a gigantic stage set that enveloped the whole audience."

Many of Eberson's later designs, some executed with his son Drew, were in the Art Deco style. In all, Eberson designed close to 100 movie palaces, located in dozens of states in the United States. Others can be found in Mexico City, Mexico as well as in Perth, Sydney and Melbourne, Australia.



MPNA NEIGHBOR'S EXPERIENCE WITH VIA PRIMO

By Ferne Burney

In mid-December, MPNA residents began to spot sleek buses traveling up and down Fredericksburg Road and stopping at the newly created PRIMO stations. We have worked for the past two years as a board, communicating our desires for the station within the boundaries of Monticello Park. We think that some tweaking will still be done to meet what was agreed upon and passed by the Historic Design Review Commission, but that is another story.



Long-time MPNA Board Member, Michael Robbins (pictured left), works at the Justice Center in downtown San Antonio and thought that traveling to work via Primo might be an economic choice. On his first trip on the new bus, he relates that he tracked the timing to and from work. He left home at 7:15 am and arrived at the Mary Louise station at 7:22 am. He then boarded the bus at 7:28 am and arrived at the Bexar County Justice Center at 7:41 am. He arrived at his office at 7:44 am. The total travel time of 29 minutes nearly equaled the normal drive time of 25 minutes. Mike stated that he thought he could have met or beaten that time had he arrived at the station a little closer to the time of the arrival of the bus.

He reports that the bus was clean and still smelled new. The number of riders seemed about the same, but the seats and the new space allowed for all to feel less crowded. His ride home was somewhat longer, 37 minutes. The bus was very crowded on the return trip, and Mike noticed that those who were forced to stand over the articulated portion of the floor on the bus were less than pleased as the bus turned corners.

Some other initial observations include each of the Primo stations, sold to the public as a way to increase ridership, accommodate just 6 people with seating. The arrival data displays were not completely accurate and the Primo service is running less often and sometimes using smaller buses than advertised.

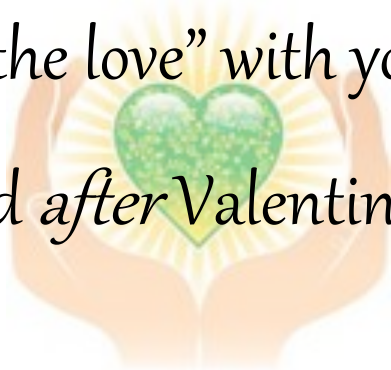
Mike states that he plans to use the Primo service at least once per week to save on gas money and parking fees. This writer would like to add that after a recent jury service, an option would be for the bus to transfer me to and from the Justice Center. Though I was able to drive to the main garage in 25 minutes, and the parking was \$1.00, it took me thirty minutes to be able to exit the garage as all of the other jurors were also exiting. The bus appears to be a more than appealing alternative!



If you haven't experienced Primo service yet, be sure to join us for the "Share the Love" February MPNA Social. See details on the next page.

♥MPNA “SHARE THE LOVE” SOCIAL♥

Why not “share the love” with your neighbors the weekend *after* Valentine’s Day?



**Meet at the VIA PRIMO station at Mary Louise & Fredericksburg Rd
Sunday, February 17 @ 5pm.**

Round trip bus fare covered (up to 45 MPNA residents).

We’ll ride downtown to eat at Alamo Street Eat~Bar.

**There is a 0.4 mile walk between the bus stop and the food truck park.
If it’s too cold/wet we’ll ride to & eat at Pico De Gallo (111 S. Leona St.).**

Please consider driving to join us if you can’t do the bus ride/walk!

Questions? Call Sarah @ 387-2108.



Enjoy San Antonio’s first Urban Gourmet Food Truck Park where Food diversity hits Southtown in a big way. Located at The Historic Acapulco Drive Inn, Alamo Street Eat Bar provides gourmet eats and San Antonio draft favorites. Sit in the shadow of HemisFair’s Tower of the Americas and walk to all your favorite Downtown locations. <http://alamostreeteatbar.com>

WINDOW RESTORATION WORKSHOP

February 1-2, 2013 • 9:00 am–4:00 pm • Historic Acosta/Halff House in HemisFair Park

Friday, February 1st

This session will focus on the basics of repair and restoration using the historic Acosta/Halff House windows for a hands-on learning experience. Session is open to registered homeowners and contractors. Training begins at 9:00 am at the Acosta/Halff House in HemisFair Park.

Saturday, February 2nd

Encouraged for contractors or professionals interested in advanced training on wood window restoration. Participants will be certified by the City of San Antonio in wood window restoration at the end of the session. Training begins at 9:00 am at the Acosta/Halff House.

REGISTRATION INFORMATION

Registration forms are available at www.sanantonio.gov/historic

For more information contact Adriana Munoz at 207-0166 or adriana.munoz@sanantonio.gov

REGISTER TODAY! Windows are a character-defining feature of historic buildings that can last for decades if properly maintained. This workshop, presented by the City's Office of Historic Preservation, the UTSA College of Architecture, ARTchitectural Interiors, Downtown Operations, and HPARC is designed to teach the basics of wood window care and repair.

The one-day course is geared for homeowners looking for the basics, while the more extensive two-day course is for contractors and students interested in receiving certification in wood window restoration. Individuals receiving certification will be included on the Office of Historic Preservation's list of Certified Window Repair Professionals. The window workshop will be held at the historic Acosta/Halff House in HemisFair Park. The Victorian Eclectic home was built in 1893 as a single-family residence, converted into a rooming house in the 1950s, and eventually became an architectural showpiece in the 1968 HemisFair. The home still stands in its original location as part of HemisFair Park and is owned by the City of San Antonio.

Participants will rehabilitate the existing windows of the building and gain valuable knowledge about wood window restoration. The workshop is a hands-on opportunity to learn how to save thousands of dollars through simple do-it-yourself techniques and proper window maintenance.

COST

Homeowner (1-day course) \$195

Student (with valid ID)
(2-day course & certificate) \$150

Contractor (2-day course & certificate) \$395

Registration fee includes window restoration materials, hands-on training, lunch, & tour of the Acosta/Halff House.

INSTRUCTORS

Victor Salas, expert craftsman and HDRC Commissioner, will teach participants to assess a window's condition and provide basic to advanced repair. Mr. Salas is the owner of ARTchitectural Interiors, a custom wood and metal work design company in San Antonio.

Sue Ann Pemberton, architect and professor with the UTSA College of Architecture, will educate participants on the value of historic windows and the historical significance of the historic Acosta/Halff House.

WINDOW RESTORATION WORKSHOP

Register Today! Space is limited!

February 1st and 2nd, 2013

9:00 AM – 4:00 PM

Acosta/Halff House in HemisFair Park

WORKSHOP REGISTRATION FORM

Please Type or Print

Name _____

Organization/Company _____

Address _____

City/State/Zip _____

Phone _____ E-mail _____

Payment Method (circle one) Check Credit Card

The City will accept checks or credit cards. Please make checks payable to *The City of San Antonio*. If paying with a credit card, you must drop off your registration form in person at 1901 S. Alamo at the Historic Preservation Counter. Check payments may be dropped off or mailed to:

**City of San Antonio
Office of Historic Preservation
1901 S. Alamo**

Course Registration (please check one)

_____ **One-Day Course – February 1st..... \$195**
_____ **Two-Day Course (student with valid ID) – February 1st & 2nd \$150**
_____ **Two-Day Course – February 1st & 2nd \$395**

Course includes:

- In-depth, hands-on training on wood window care and repair
 - All materials needed during the workshop
 - Safety equipment
- Wood Window Repair Manual
Lunch (please indicate preference below)

February 1st

- Station Club Sandwich:** Cheddar and Provolone cheeses with turkey, ham, lettuce, tomato, and mayo
- Habanero Turkey** – Garlic habanero aioli on a hot turkey sandwich with lettuce, tomato, and melted provolone
- Habanero Roast Beef** – Lean roast beef with melted provolone and a garlic habanero aioli, lettuce, and tomato.
- The Veggie Sandwich** – Homemade hummus with shredded carrots, cucumber, yellow squash, lettuce, tomato, and a hint of chipotle.

February 2nd

- Oven Roasted Turkey Breast
- Chicken Salad
- Tuna Salad
- Roast Beef
- Ham
- Veggie

Choice of Bread:

- White
- Whole Grain Wheat
- Organic Wheat Wrap

Please meet at the Acosta/Halff House in HemisFair Park by 9:00 AM the day of the workshop. Registration fees are not refundable. Contact Adriana Munoz at adriana.munoz@sanantonio.gov or (210) 207-0166 for additional information.

Monticello Park resident, Gary Martinez, wearing his new T with his dog, Ellen.



Dudes and dogs love 'em!
Get your premium, pre-shrunk 100% cotton MPNA Logo T FREE when you join or renew your MPNA membership. Otherwise, they're 10 bucks. Show your neighborhood pride and take advantage of a daschund good deal.

**Limited quantities left so become a member today! Offer valid until t-shirt supply runs out or 1/31/13, whichever comes first. Specify size on the "Other" line on the membership form below. Only one t-shirt per household membership. The cost of membership dues minus the cost of the T-shirt (\$10) will be the portion of your membership dues that is tax deductible.*

MONTICELLO PARK NEIGHBORHOOD ASSOCIATION

The Monticello Park Neighborhood Association is for everyone (owners and renters).

Yes, I want to invest in my neighborhood. Enclosed is my 2013 contribution.

Name: _____ Phone: _____

Address: _____

E-mail Address: _____

I would also like to help on the following committees:

<input type="checkbox"/> Finance	<input type="checkbox"/> Social Activities	<input type="checkbox"/> Park
<input type="checkbox"/> Fundraising	<input type="checkbox"/> Safety/Crime Prevention	<input type="checkbox"/> Zoning
<input type="checkbox"/> Membership	<input type="checkbox"/> Historical Preservation	<input type="checkbox"/> Home Tour
<input type="checkbox"/> Directory	<input type="checkbox"/> Scholarship	<input type="checkbox"/> Newsletter

Membership Dues

<input type="checkbox"/> \$10 Senior Dues
<input type="checkbox"/> \$15 Member Dues
<input type="checkbox"/> \$___ Additional for _____

Other: _____

Send to:
MPNA P.O. Box 5851 · San Antonio, TX 78201

The MPNA has worked hard to achieve its 501(c)3 status. What does that mean to you? Any dues paid, any donation to the association (such as for scholarships), any expense to you on behalf of the Association is now tax deductible. Check with your tax preparer concerning any deductions you want to take. This is a major step forward for our association!