

MONTICELLO PARK

NEIGHBORHOOD ASSOCIATION NEWSLETTER



March/April 2004

NEXT MEETING

MONDAY
March 29, 2004
7:00 PM

Grace Presbyterian Church
950 Donaldson Avenue

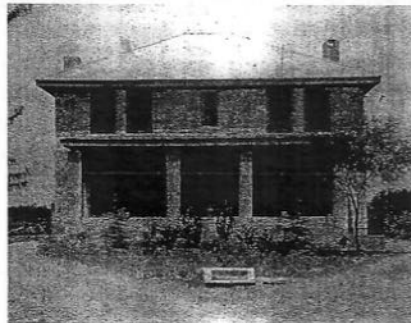
Future Meetings:

General Assembly

- March 29
- May 24
- July 26
- September 27
- November 29

Board

- April 12
- May 10
- June 14
- July 12
- August 9
- September 13
- October 11
- November 8



The Bihl House - circa 1920.



The Bihl House - today.

REMEMBER THE BIHL HOUSE

By
Eric F. Lane

Even in its present state of dilapidation, it retains a sense of majesty. Yes, the windows are broken and shuttered with plywood. The interior is in disrepair and unsafe to enter. And the exterior is covered with years of graffiti. But, locked deep within the creases of its stone walls lies a secret, a secret so momentous that it should cause every Monticello resident to pause and realize that history, whether remembered or forgotten, is our neighbor.

It sits at the edge of the historical Monticello Park neighborhood on Fredericksburg Road across the street from the famed San Antonio watering hole, the Tip Top Café. Weathered by time and neglect, it's known as the Bihl House. I was curious about the history of the Bihl House. I'd heard many different and sometimes conflicting accounts. Some folks referred to the house as the Garza House. This turned out to be partly true. Eusebio Garza, a pharmacist, did live there with his wife, Carolina, from about 1929 until 1934, but they were the second owners. It didn't take long to discover that George David Bihl was the original builder and owner, and thus, namesake of the house. His daughter, a retired math teacher at San Antonio's Vocational and Technical School, still lives here in San Antonio. I immediately picked up the phone and called her.

On a spectacular lapis lazuli February afternoon, Mrs. Alleen Bihl Scott Locklear met me at her front door and welcomed me into her home. This is a woman from the old school, brought up in an age when intelligent women hid behind a demure façade. Yet, by the age of fifteen, Mrs. Locklear had graduated from high school, and by the age of eighteen, she had a degree in philosophy from Incarnate Word. We sat at the dining room table with her husband, J.R., and her son, Vernon, who joined us late.

With gentle but piercing blue eyes and a Texas songbird voice, Mrs. Locklear began.

"Daddy put up a subdivision and we had an awful time getting water out there," she said, showing me an old, faded photograph of the Bihl House taken about 1920.

"I was about five or six years old back then. Daddy was trying to sell parcels of land out there and we lived for a while in a stucco house while he built the rock house."

Continued on page 8...

PRESIDENT'S MESSAGE

**2004
Monticello Park Neighborhood
Association**

Board of Directors

President: David R. Logan
734-4549
V. President: Rob Sipes
738-0379
Secretary: Gladys Propes
736-5608
Treasurer: Joe Stehle
735-5032

Board Members

Jesus Cardenas.....735-3848
Robert Espinoza.....738-8528
Jesse Gonzales.....734-2237
Charles Kesl.....738-0191
Roy Muñiz.....736-1051
Enrique Valdez.....734-6857

Newsletter Committee

Editor: Eric F. Lane
Copy Editor: Kellen Kee McIntyre
Production Manager: Tim Logan
Advertising Manager: Roy Muñiz

Advertisement Prices

For pricing information call: 736-1051

MPNA Address:
**P.O. Box 5851
San Antonio, Texas 78201**

The year has started very well for the association. A wonderful groundbreaking ceremony was held for Primrose at Monticello Park on March 3rd. Southwest Housing, the developer, is proving to be an exceptional neighbor. You must visit the site to learn more.

Our financial records are in good hands. A CPA is handling the IRS filing and the State's tax franchise report. The association is in good standing as a State corporation and is up to date with the IRS. The time spent on this will benefit the association for years to come and make things much easier for future officers and directors. A new way of producing the Newsletter has improved its content and size. It has also provided more time for me to represent the association. Please contact Eric Lane, the editor, to contribute your articles or other information the association should know about. Another goal of the Newsletter is to make it self-sustaining through advertising. It is well on its way in doing this thanks to the efforts of Roy Muniz. A website is being developed by our neighbors, Jennifer and Peter Caritas. A launch date is forthcoming. The website has so much potential for our association, and I thank the Caritas for sharing their knowledge with the association.

Now for updates from the last membership meeting. The air traffic noise is due to wind direction at San Antonio International Airport. According to a spokesman from the airport, a north wind causes runway #3 to be used. All air traffic flies over our area at that time.

For you folks in the 400 block of Furr and 500 block of Donaldson, your alley has been repaired by Public Works. By the time you read this message your trash collection should be back in the alley. According to Public Works, alley repairs throughout the area will be done. They are starting at Texas and Wilson and will work north. The projected completion date for this work is July 18th. With Public Works being held responsible to maintain our service alleys we, as homeowners, have a responsibility too. Driving through many of the alleys, I have noticed untrimmed bushes, trees, stacked wood, concrete blocks, and other debris that create a hazard for our trash collectors and other utility personnel. As you know, Joe Stehle has started an Alley Clean-up campaign. The clean-up will trim bushes, trees up to 15', and keep them trimmed for \$5.00 per household. Donate now so this program can be funded. Other debris in the alley causing a problem or hazard is your responsibility as a homeowner. Isn't home ownership fun?

The January membership meeting provided volunteers for five committees. The February board meeting discussed the committees and one was voted down for this year. The Tour of Homes had one volunteer and I thank them for wanting to help. However, the Tour of Homes requires many people and some long hours. With cancellation of the Tour of Homes, which is a major fundraiser, the board is now looking to do another Garage Sale. Other fundraising projects have been discussed. Do you have an idea for a neighborhood fundraiser? If so, please submit it to me.

The March meeting will have a guest speaker from the Bexar Appraisal District. Some of the topics to be discussed will be: 10% cap; how to protest the appraisal; changes regarding informal and formal hearings; the appraisal grids; and much more.

Hope to see you all on March 29th.

David Logan
MPNA President

For article submission
and calendar of events
please contact the
editor, Eric F. Lane
732-6564
eflane@swbell.net

FROM THE EDITOR

As I write these words, tomorrow, March 20th, will be the one year anniversary of the start of the second war with Iraq. Whether you agree with the war or not, I wanted to take a moment to honor the sacrifice that many of our family, friends and neighbors in uniform are making. Many of us know the worry and sinking feeling of having family members in harms way. The words that come immediately to mind are gratitude and heartfelt concern for the safe return of all our neighbors and family members who serve in uniform. Thank you.

Eric F. Lane
Editor, MPNA Newsletter

CDC REPORT

The highlights of February's activities for the Jefferson Woodlawn Lake CDC are as follows:

- After 4 years of excellent service to the community, our Executive Director, Noel Suniga, will be leaving us soon. Noel has informed the CDC Board that the time has come for him and his family to look for other ways to serve the community. He leaves with our blessings and support. Currently, our Board is engaged in the search for a new Executive Director. You won't have to look far to find Noel, though. He has agreed to continue to serve the CDC in a volunteer capacity and we look forward to his continued presence as we continue to work towards the revitalization of the Deco District.
- As part of the Travis Building Redevelopment Project, the City has begun the process of moving forward with providing much needed parking for the Travis Building and the Deco District. Together with the City of SA, we have begun the Planning and Zoning process to acquire 5 properties behind the Travis Building to construct a parking area as required by the UDC. There was a community meeting on Thursday, March 11th to gather input from the neighbors directly affected by the changes. The input gathered from that meeting will be considered and incorporated into the final landscaped parking lot design. We are proposing to relocate 3 of the homes to vacant lots in the city as part of the HARP (the City's Housing Asset Recovery Program). More to come ...
- The CDC and the community are continuing to work with HEB concerning the relocation and reinstatement of the bricked pedestrian crosswalks at Mary Louise and Fredericksburg. Through the hard work of Noel Suniga, Jed Maebius, Rob Sipes (MPNA Vice-President), Alex Soto (Woodlawn Lake Community Association President), John Davis (Los Angeles Heights/Keystone Association President) and Justin Rodriguez (Jefferson Neighborhood Association President), we are working towards a final agreement with HEB to be executed on March 23rd. Those of us involved with this agreement are thankful for the full cooperation and good faith that HEB has shown in taking care of this important issue. HEB representatives continually displayed their commitment and concern for our community and we thank them for being such good neighbors.

As always, for more information on the Jefferson Woodlawn Lake CDC, please visit our website, www.decodistrict.org.

Until next time,
Paul C. Stahl
President
Jefferson/Woodlawn Lake Community Development Corp



FROGGYTILE

Ray Fragoso

Ph (210) 733-7912 Cell (210) 392.1120

Ceramic Walls & Floors

DINING IN THE DECO

Alamo Pizza

Reviewed By:

Tim Logan

Since June of last year, our neighborhood's appetite has been satisfied by the fresh, unmistakable flavor of Alamo Pizza on Fredericksburg Road in the heart of the Deco District. One of Jefferson Plaza's more recent additions, Alamo Pizza provides fresh salads, hot sandwiches, delicious calzones, flavorful wraps, a variety of appetizers, and, of course, their signature pizzas.

The current menu has not changed much from the original one established at the first location on the south side. However, Alfred Nuñez and David Garcia have made a few interesting modifications to their specialty pizzas. They have added Chicken Enchilada Pizza layered with enchilada sauce, mozzarella cheese, grilled chicken, pico de gallo, and the flavor of the city it was born in. Alamo Pizza also offers Bar-B-Q Chicken Pizza, a smoky Texas favorite.

Along with these regional pizza specialties, Alamo Pizza has added to its menu Ranch Chicken and Spicy Chicken wraps that contain seasoned chicken, lettuce, tomato, onions, cheese, and a dressing all rolled up in a flavorful herb garlic wrap. The wraps contain a blast of flavor that explodes on the first bite. They are terrific!

Perhaps the most intriguing part of the menu is the appetizers: hot wings, bread sticks, mozzarella sticks, chicken tenders, fried mushrooms, chipotle poppers, and fried pickles! Yes, you read that right. Fried pickles are just one example of the variety that Alamo Pizza provides. If you have never had fried pickles, stop by and try some. The most interesting appetizer of all is the Pizzadilla. This is the Italian version of the quesadilla; definitely a unique and worthy addition to the list of appetizers.

All in all Alamo Pizza provides a wonderful array of selections for a hungry customer. Daily lunch specials are offered Monday through Friday from 11:00 am – 2:00 pm that include a delicious hot sub, chips, and a drink for only \$4.99. What a deal!!! So stop by and satisfy your appetite at the Alamo Pizza in the heart of the Deco District.

Dear Neighbors:

It is my honor to serve as the Chair of the **Monticello Park Neighborhood Association Scholarship** committee for the second consecutive year. This year graduating high school students will be competing for a **\$750.00 college scholarship**. Sponsored and funded by the MPNA, applications will be available to students who **reside in the Monticello Park Neighborhood Association area** and/or **attend Thomas Jefferson High School**. To receive an application and for additional information, please e-mail me at dianajennifer@satx.rr.com or call (210) 843-4159. Please note that the application deadline is Wednesday, May 5, 2004.

Sincerely,
Diana Arevalo


GUS MANN AUTOMOTIVE

Complete Automotive Repairs
General Electrical - Brakes
Tune-Up • A/C • Etc.
Driveability - Computer Diagnostics
Nationwide Warranty

Mike Koebke **736-4221** 2202 Fredericksburg Rd.
mike@gusmannauto.com San Antonio, Texas 78201

Open 7 Days A Week

 **Michael C. Becker, D.V.M.**
732-5148

Mon-Fri 7:00 a.m. - 9:00 p.m. **Central West Animal Hospital**
Sat-Sun 8:00 a.m. - 5:00 p.m. 804 West Avenue
House Calls Available San Antonio, Texas 78201

MPNA EASTER EGG HUNT

On Saturday morning, April 10th, an Easter Egg Hunt will be held at Monticello Park between 9:30 and 11:30. Volunteers are very welcome as well as donations of individually wrapped candy. For further information call Susan Dusek at 734-9019. Let's make this year's Easter Egg Hunt one the little ones will never forget. Volunteer and then watch the delight you've helped create.



On March 11, 2004, Southwest Housing celebrated the official groundbreaking for Primrose at Monticello Park. Putting their foot to the shovel are Paul Stahl, CDC President, Aurora Ortega Geist, Fannie Mae, Brian Potashnik, CEO of Southwest Housing, Mayor Ed Garza, State Representative Joaquin Castro and David Logan, President of MPNA.

HELPFUL NUMBERS

Animal Control	737-1442
Brush Pickup	522-8831
Code Compliance	207-7230
Councilman Julian Castro	207-7040
Garage Sale Permits	207-8263
Health Department	207-8780
Historic Preservation	207-7873
Jefferson Co-Op	735-9419
Noise Complaints	207-7230
Non-emergency	311
Police West Substation	207-7420
SAWS (San Antonio Water System)	227-6143
SAFFE Officer Pager- Marcus Cerda	759-3612
Youth Services	207-7191

TREASURER'S REPORT

On March 29, 2004, the Monticello Park Neighborhood Association will hold its second general assembly meeting of the new year. Hopefully, many of you will be able to make the meeting. The January meeting was a great success. This meeting is important.

As Treasurer, may I say it is not fair for some of us to pay our membership dues and alley clean-up fees for those who receive the same service. If you don't support the small \$5.00 a year fee for a clean neighborhood alley, please feel free to call me at 210-735-5032. I will listen. But remember, the city does not clean your alley. We can make them fix chuck holes and mow the high grass, but the neighborhood will contract the tree trimming so garbage trucks can drive through without getting hurt by the branches.

This project is important and we do not want to delay the work due to insufficient funds. If you are in doubt or need more information call me, Joe Stehle, Alley Chairman. I will be available to answer any questions. Please mail your contribution for alley clean-up to M.P.N.A., P.O. Box 5851, San Antonio, TX 78201, or call me.

Ending February 29, 2004:	Checking Account _____	\$3,835.49
	Savings Account _____	2,456.43
	C.D. Account _____	11,329.70

Hope to see many of you at the general meeting March 29, 2004.

Your Treasurer,
Joe Stehle

HEB CROSSWALKS UPDATE

What happened to the brick crosswalks at HEB? This common question has been asked a few times at past general assembly meetings. Here is the story, but first... some history.

Thirteen years ago, the Monticello Park Neighborhood Association, along with other adjacent associations, secured a grant for streetscape improvements along Fredericksburg Road. Power lines were buried, trees were planted, and decorative brick crosswalks were installed. The Deco District renaissance was beginning. One missing component: a new HEB.

Fast forward to 2001. HEB wanted to build a new and larger store. The community wanted a store that would architecturally match the "deco" theme. A group, comprised of representatives from the various neighborhood associations, worked diligently with HEB to ensure that the new store would blend properly into the community. HEB agreed to design additional landscaping, create a distinctive pedestrian walkway from the stone bus stop at Club Drive, and move the gas station from its preliminary location. The one big tradeoff was that West Avenue would be closed from Hildebrand to Mary Louise Drive. A Community Agreement was signed, and the resulting "Deco B" was constructed.

A problem then arose: when HEB reconfigured the entrance into the store, the crosswalks at Mary Louise Drive were no longer in the proper location. Due to some miscommunication, HEB removed the existing pavers, filled them with asphalt, and put reflective striping for a new crosswalk. After I asked HEB about the walks, the Jefferson/Woodlawn Lake CDC became involved and moderated some very productive meetings between the affected parties. These meetings not only required all the neighborhoods to be in agreement with HEB, but also the approval of both the City of San Antonio and TxDot.

Meanwhile, HEB was approached by some homeowners behind the new store about buying three additional houses on West Hollywood. The purchase of these houses would allow HEB to "square off" the store's site and eliminate a dead-end street. In addition, because our store has exceeded sales expectations, the additional land would allow HEB to either expand the parking area or the store itself in the future. The zoning change, however, would require amendments to both the Near Northwest Community Plan and the Community Agreement. Because the Los Angeles Heights/Keystone neighborhood was in favor of the purchase, the other neighborhood representatives deferred to their judgment. Los Angeles Heights, in turn, agreed to support Monticello Park in our desire to see the return of the brick crosswalks.

Finally, the GOOD news - HEB has agreed to pay for the reinstallation of these brick crosswalks, and will work with the city to place a crosswalk signal on the south side of Mary Louise. We anticipate a "signing party" of the amendment at the end of March with construction to begin in April. We must, however, realize that the installation process will take some time, and will require some lane closures. Our patience, however, will be rewarded. We also need to remember how fortunate we are to have an organization like the CDC that gets involved, and the necessity of maintaining good relationships with the other neighborhood associations in our community.

Rob Sipes
Vice President

Monticello Park Neighborhood Association



Patricia Jahns
Owner/Manager

3534 Fredericksburg Rd., Ste. 18
San Antonio, TX 78201
Tel: 210-731-8788
Fax: 210-731-8699

Randy Rice, Realtor

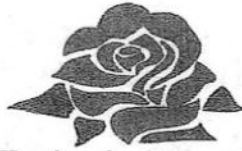
The Legacy Group/Keller Williams

LEGACY
GROUP



210 • 844 • 0102 Randyrlst8@aol.com

remember me for all your real estate needs



PRIMROSE
at Monticello Park
Residence for the Ages



AFFORDABLE HOUSING COMMUNITY FOR ACTIVE SENIORS 55 & BETTER

**1 BED 1 BATH..750 SQFT
2 BED 1 BATH ..950 SQFT
2 BED 2 BATH..987 SQFT**

**W/D CONNECTIONS, CERAMIC TILE ENTRY & BATH, BERBER CARPET
ACCESS GATES WITH REMOTE ENTRY
PATIO OR BALCONY, ELEVATORS
HANDICAP ACCESSIBLE HOMES AVAILABLE
ACTIVITY CENTER/COORDINATOR AND POOL
SCHEDULED EVENTS & TRANSPORTATION
LOCATED ON CITY BUS ROUTE
RETAIL AND RENNOVATED BIHL HOUSE *COMING SOON***

**NOW PRE-LEASING
INFORMATION- 1.866.880.7884**

**2719 FREDRICKSBURG ROAD
SAN ANTONIO, TEXAS
LOCATED ACROSS FROM THE TIP TOP CAFE
WWW.SOUTHWESTHOUSING.COM**

***INCOME RESTRICTIONS MAY APPLY**

**PRICES RANGE
FROM \$525-635**



...continued from page 1, "Remember the Bihl House"

"I can tell you that the rock is historical," Mrs. Locklear said, pointing to a picture of her mother standing next to a mound of rocks. "You see, Daddy got the stone from the Old Saint Mary's Church downtown when they tore it down. He'd go down there to get the rock and truck it up to the property."

"So, your father went down there and picked up the stone from the old church?" I asked.

"Stone is stone," her son jumped in. "If you'd been brought up like I've been brought up, if you've got useful material, you use it."

"Yes," Mrs. Locklear continued and then she dropped the bombshell:

"When they built the original Saint Mary's Church they took the stone from the fence around the Alamo."

"What do you mean?"

"Well, when they built the Old Saint Mary's church in 1870, they used the rock from the fence around the Alamo. So, when they tore it down later, Daddy went and got that rock, cut it to size, and used it to build our house."

I sat stunned.

"You mean to tell me that the old Bihl House was built of stone from the Alamo?"

"That's what I've been told."

"In 1852," her son added, "David Russi, George Bihl's grandfather on his mother's side, my great, great grandfather, was commissioned by the U.S. Army to re-build parts of the Alamo as a feed house and depot. When the Civil War broke out in 1861, Colonel Twig surrendered his garrison in front of the Alamo. We're not sure how the Confederates used the Alamo, but after the Civil War the Alamo was basically abandoned. In about 1870 the original St. Mary's Church downtown was built. Stone was taken from the Alamo fence that lay strewn around the premises, cut to size and used to construct the new church. Fifty years later or so, Saint Mary's was knocked down and my grandfather went down and trucked the rock up to its present location."

"He squared off the rocks and reused them to build the Bihl House," Mrs. Locklear added. "They had to saw almost every rock."

Now, something I'd heard made sense. A rock expert had looked at the Bihl House and was puzzled by the fact that there were two distinct types of rock used in the construction. On close inspection, one can see the noticeable differences in the stones.

"So, you're pretty certain that the rock came from Old St. Mary's Church," I asked Mrs. Locklear.

"That's what I've heard all my life."

"How can we prove that the rocks that built St. Mary's original church came from the Alamo?"

"Because of the stone. There is a certain quality, a certain type of rock that was used over at the Alamo. And that's the type of stone that was used at St. Mary's Church and, later, to build our stone house."

"A stone expert would know?" I asked.

"I would think so." Mrs. Bihl answered.

George Bihl died on Oct. 11, 1932, at the age of 57. He had just finished building a "pretty" house at 446 East Hildebrand. It was a sudden and tragic death that changed dramatically the life of Alleen Bihl and her mother, Allie Bihl. But that is another story for another day.

On March 3rd, Mrs. Alleen Bihl Scott Locklear and her family were the honored guests at the groundbreaking of the new Primrose Senior Community Development at Monticello Park. The old Bihl House will be rehabilitated and plans are to turn it into a community art gallery and performance center. And more than the spirit of the Alamo, the spirit of that little girl so many years ago will permeate the Bihl House and will be remembered with nothing but joy and affection.



Mrs. Alleen Bihl Scott Locklear

CALENDAR OF EVENTS

1)MPNA Easter Egg Hunt. Saturday, April 10th, at Monticello Park between 9:30 & 11:30 am. For more information contact Susan Dusek at 734-9019.

2)April 15th at Woodlawn Theater *The Annual Bluebonnet Tour* with Dana Cooper, Shake Russell, and the annual return of Anni & Clark. 7:30 pm \$15 & \$35 (reception w/artists after concert, wine & hors d'oeuvres will be served) call 738-1291.

3)**SOLIDARITY:** Peer Support for Those in Recovery with a Mental Illness, 1st & 3rd Saturday of the month @ 10:30 am Travis Park United Methodist Church, downtown corner of Navarro & E. Travis. For more information call: 734-7527, e-mail: Mentalhealthjustice@yahoo.com "Respect and Justice through Unity"



Jefferson Bank

We're just better at banking™

9 Banking Centers to Serve You

Alamo Heights6021 Broadway
 Blanco Road.....14614 Blanco Rd.
 Fredericksburg Road.....2900 Fredericksburg Rd.
 Downtown.....711 Navarro (Travis Park Plaza)
 Great Northwest.....9005 Grissom Rd.
 Leon Valley.....7666 Bandera Rd.
 Northeast Loop.....1777 N.E. Loop 410
 Stone Oak.....19002 Stone Oak Parkway
 Sunset Ridge..... 6310 N. New Braunfels

Mortgage Loan Offices

6015 Broadway • 7666 Bandera Rd.
 1777 N.E. Loop 410 • 19002 Stone Oak Pkwy.

734-4311

www.jeffersonbank.com



MONTICELLO PARK NEIGHBORHOOD ASSOCIATION

The Monticello Park Neighborhood Association is for everyone (owners and renters). Recommended annual contributions are \$15.00 per household and \$10.00 for seniors.

Yes, I want to invest in my neighborhood. Enclosed is my 2004 contribution.

Name: _____ Phone: _____

Address: _____

E-mail Address: _____

I would also like to help on the following committees:

- | | | |
|--------------------------------------|--|-------------------------------------|
| <input type="checkbox"/> Finance | <input type="checkbox"/> Social Activities | <input type="checkbox"/> Park |
| <input type="checkbox"/> Fundraising | <input type="checkbox"/> Safety/Crime Prevention | <input type="checkbox"/> Zoning |
| <input type="checkbox"/> Membership | <input type="checkbox"/> Historical Preservation | <input type="checkbox"/> Home Tour |
| <input type="checkbox"/> Directory | <input type="checkbox"/> Commercial Revitalization | <input type="checkbox"/> Newsletter |

Comments: _____

Send to:

MPNA P.O. Box 5851 • San Antonio, TX 78201

ALAMO PIZZA

Calzones • Subs • Hot Wings

1702 W. Gramercy at Zarzamora

(210) 734-2400

Monday - Thursday

10:30 - 9:00


Friday - Saturday

11:00 - 10:00

Sunday

11:00 - 9:00

All PIZZA is Not the same. Try one of ours and taste the difference.

Whole Pizza(8 Slices)	14"	16"	Pizza by the Slice
Cheese	6.99	8.99	Cheese.....  \$1.99
1 Topping.....	8.24	9.99	1 Topping..... \$2.39
2 Topping.....	9.19	11.50	2 Topping..... \$2.89
Stuffed Crust...8.99	10.99		Additional Toppings 50
Extra Toppings	1.25	1.50	

Appetizers	6pc	12pc	20pc
Hot Wings	2.89	5.25	9.99
Bread Sticks	2.25	4.50	7.99
Cheese Bread Sticks	2.89	5.78	9.50
Mozzarella Sticks	2.75	5.25	8.99
Chicken Tenders	2.99 Sm.	4.49 Lg.	
Fried Mushrooms	1.79 Sm.	2.99 Lg.	
Chipotle Poppers	1.99 Sm.	3.25 Lg.	
Pizzadilla (3 toppings)	2.79 Sm.	4.89 Lg.	
Fried Pickle Wedges	1.79 Sm.	2.99 Lg.	

Monticello Special

X-Large Double Pepperoni
with 6pc Hot Wings

for \$13.99

Expires 4/30/04

Offer Not Valid with Other Specials or Discounts

Try our calzone Special

Any Calzone
and a Drink \$5.25

Expires 4/30/04

Offer Not Valid with Other Specials or Discounts

CarryOut Specials

Alamo Pizza

Small Family Special

1 Medium 1 topping
6 pc Bread Sticks
& a Free 2 Liter Soda

\$9.99

Expires 4/30/04

Alamo Pizza

Lent Special

1 X-Large Veggie Pizza
1 Large Cheese
6pc Bread Stick

\$19.99

Expires 4/30/04

Alamo Pizza

Large Family Special

2 Large 1 Topping
Pizzas
& Free 2 Liter Soda

\$15.99

Expires 4/30/04